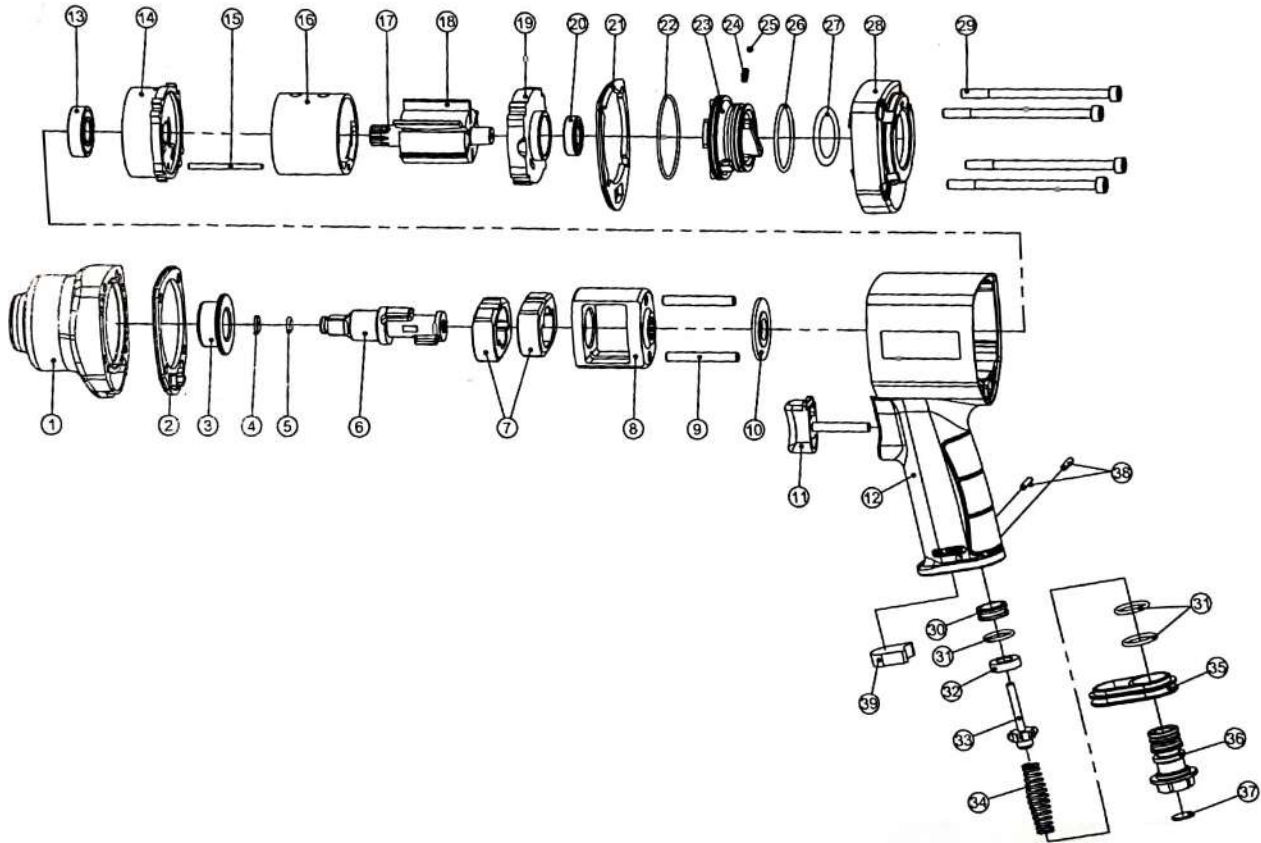


# 1/2" IMPACT WRENCH

# 1/2" PIN-LESS HAMMER AIR IMPACT WRENCH

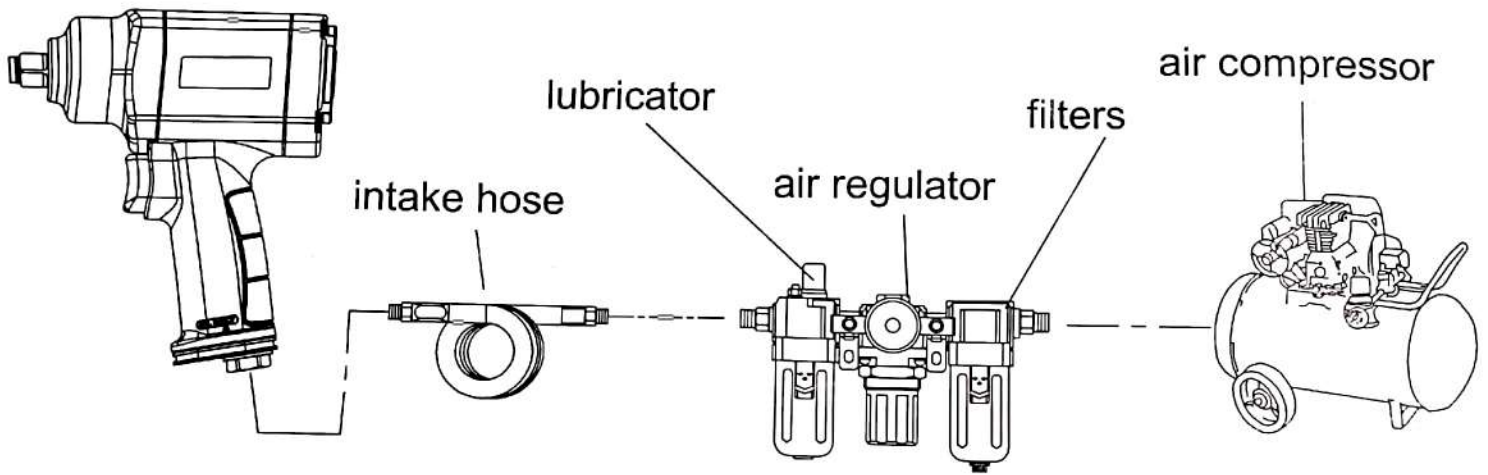
Square Drive.....1/2"  
 Rated No Load Speed.....8500 RPM  
 Maximum Torque.....1000 N.m.(737 ft.lb)  
 Envil Length.....1 Inch

Bolt Capacity.....M18  
 Hammer Type.....Twin Hammer  
 Air Inlet.....1/4"  
 Air Pressure.....6-8 BAR(85-120 PSI)  
 Net Weight .....2.5kg



NO	PART NAME	QTY.
1	HAMMER CASE	1
2	RUBBER MAT	1
3	ANVIL BUSHING	1
4	SHAFT PROTECTING LOCK/RING	1
5	O-RING 7*2	1
6	SHAFT (ENVIL)	1
7	HAMMER	2
8	HAMMER CAGE	1
9	HAMMER PIN	2
10	GASKET	1
11	TRIGGER / SWITCH	1
12	HANDLE	1
13	BEARING	1
14	FRONT END PLATE	1
15	PIN	1
16	CYLINDER	1
17	ROTOR	1
18	ROTOR BLADE / VANES	6
19	REAR END PLATE	1
20	BEARING	1

SR NO	PART NAME	QTY.
21	RUBBER MAT	1
22	O-RING 48*1.5	1
23	TIMING BUTTON	1
24	SPRING	1
25	STEEL BALL	1
26	O-RING 38*1.5	1
27	GASKET	1
28	BACK COVER	1
29	FASTENING SCREW	4
30	INLET GASKET	1
31	O-RING 16*2	3
32	RUBBER GASKET	1
33	INLET VALVE	1
34	INLET SPRING	1
35	PLASTIC COVER	1
36	AIR INLET	1
37	AIR INLET SCREEN	1
38	DOWEL PIN 3*22	2
39	SILENCER COTTON	1



## Pneumatic tools safety use instructions:

1. Before using, please first read the instructions carefully
2. During using. please wear goggles, mask and ear muff
3. when connect air compressing tube, please confirm the tools is closed
4. If need to change tools, please first remove air compressing tube no matter before using or after using.
5. During using, please do not wear any jewelry and loose cloth also do not make fair flows down.

## Air tools use and maintain notice

1. This tool should use spindle oil or sartorius oil (sew machine oil), do not use common or recycle oil, or components will be destroyed.
2. Air pressure should be at 6-8Kg/cm<sup>3</sup> when tools work, lower air pressure would not be able to play tools capacity, higher pressure will rapidly reduce tools life.
3. In order to keep normal operation, please install filters on air compressor, air regulator, lubricator.
4. If there is no lubricator, should be oiling to machine specified mouth filling before and after working, so that can play the best function.
5. Regularly check whether there is sewage or impurity on screen, if any, should obviate sewage and impurity timely. (usually once/week)
6. Check whether the leakage of air hose and fittings, and loose, to prevent low air pressure that enter into the pneumatic tool.
7. Check pneumatic tools and pneumatic tools accessories whether there is a loose connection to prevent damage to tools or injury to person when adjust or rotate accessories.
8. Non-pneumatic tools accessories are not allowed to use on pneumatic tools.
9. In case the machine does not turn or rotation is not smoothly, please fill a large number of spindle oil or sewing machine oil in the oiling mouth, and boot-strap start rotate, cleaning dirt obstacles for three or two times consecutively, if failure, please sent to dealers to rectified.



आत्मनिर्भर  
भारत



RoHS



AN ISO  
9001:2015  
COMPANY