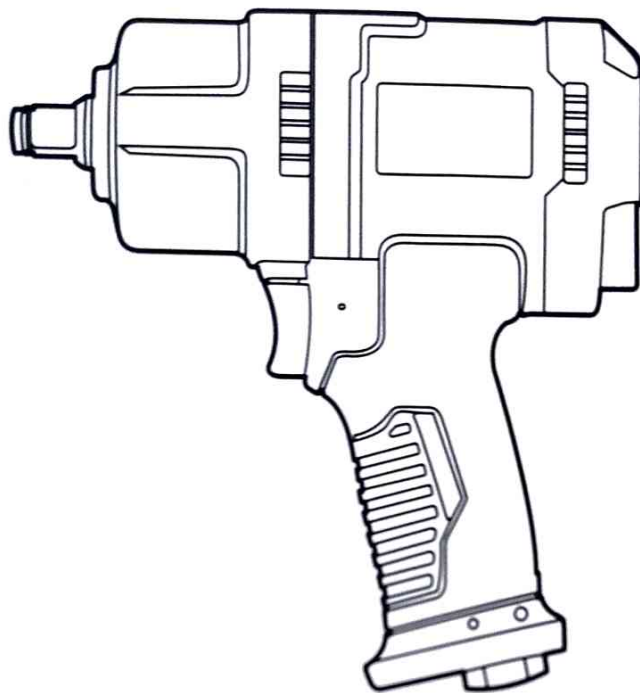


INSTRUCTION MANUAL



Technical Data:

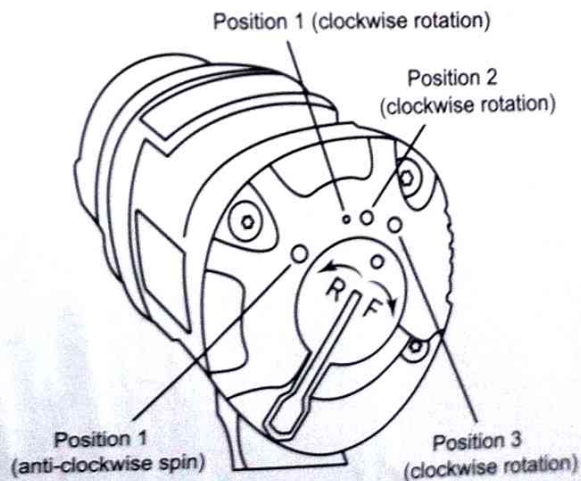
| | |
|----------------------|----------------|
| Square drive | 1/2" |
| Operating pressure | 6 bar (90 PSI) |
| Max torque | 1.560 Nm |
| Working torque | 270-800 Nm |
| Free speed | 8.000 RPM |
| Avg. air consumption | 184 l/min |
| Air inlet size | 1/4" NPT |
| Weight | 2.0 KG |

| Rotation direction | Position | Maximum torque (Indicative values*) |
|--------------------|----------|-------------------------------------|
| Reverse | 1 | 1.560 Nm |
| Forward | 1 | 200 Nm |
| Forward | 2 | 1.000 Nm |
| Forward | 3 | 1.500 Nm |

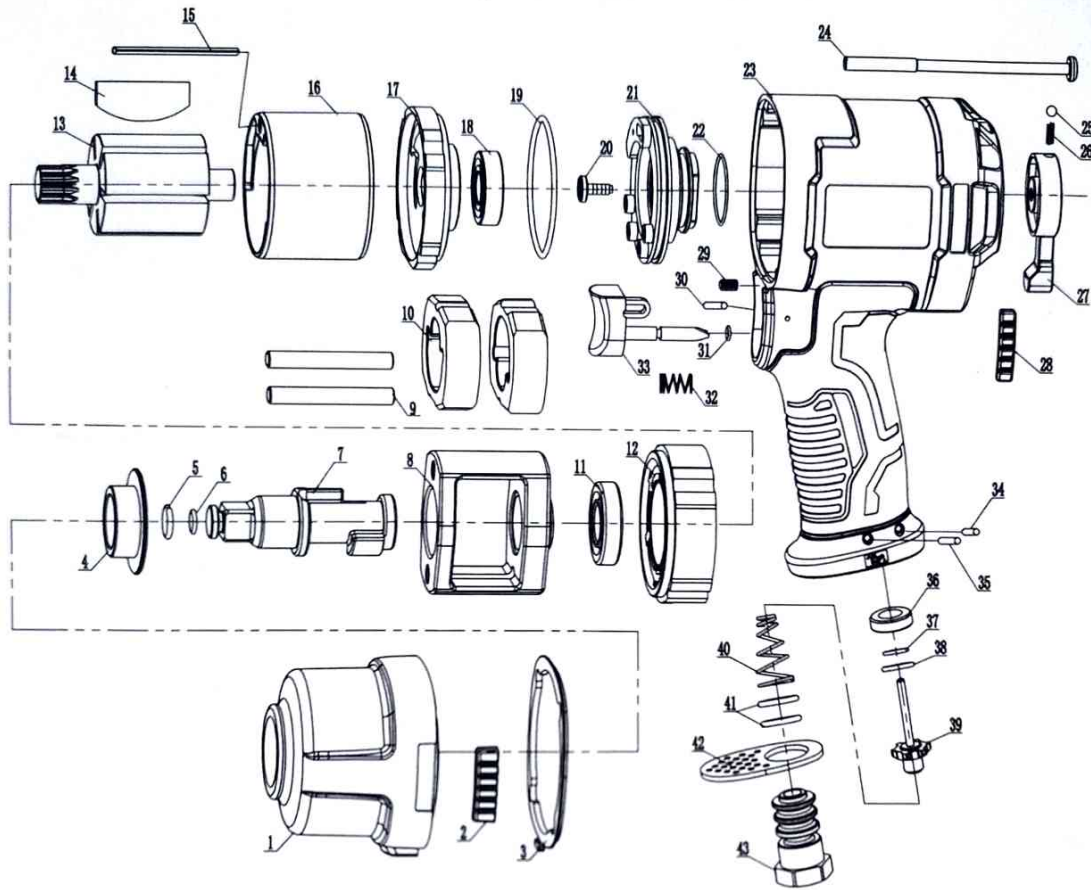
These values were obtained in the laboratory where the product was tested at 90 psi. Torque may vary due to load, lubrication conditions, air pressure.

Major safety construction

1. Use personal protective devices.
2. Designed for the work to be performed. Do not use oxygen, fuel or other packaging gases as energy.
3. Before performing any maintenance tasks, make sure to disconnect the compressed air line for emergency cut-off and prevent accidental activation. It is recommended to install a valve in area.
4. Close to the pneumatic wrench. Use clean and dry air and follow the recommended tools.
5. Do not use solvents.
6. That may react when in contact with tool parts. Before operating the tool, ensure that all parts are correctly positioned to ensure no leakage.



Explosive view



Spare part list

| No. | Description | Qty | No. | Description | Qty | No. | Description | Qty |
|-----|---------------|-----|-----|-------------------|-----|-----|-------------------|-----|
| 1 | Housing cover | 1 | 16 | Cylinder | 1 | 31 | O-ring | 1 |
| 2 | Front pad | 2 | 17 | Rear cover | 1 | 32 | Spring | 1 |
| 3 | Front gasket | 1 | 18 | Bearing 6001 | 1 | 33 | Trigger | 1 |
| 4 | Anvil Bushing | 1 | 19 | O-ring | 1 | 34 | Pin | 1 |
| 5 | Anvil bushing | 1 | 20 | Bolt M5 x10 | 1 | 35 | Pin | 1 |
| 6 | O-ring | 1 | 21 | Directional valve | 1 | 36 | Intake valve seat | 1 |
| 7 | Anvil | 1 | 22 | O-ring | 1 | 37 | O-ring | 1 |
| 8 | Hammer cage | 1 | 23 | Housing | 1 | 38 | O-ring | 1 |
| 9 | Hammer Pin | 2 | 24 | Bolt M5 x90 | 4 | 39 | Intake valve | 1 |
| 10 | Hammer | 2 | 25 | Steel ball | 1 | 40 | spring | 1 |
| 11 | Bearing 16002 | 1 | 26 | Spring | 1 | 41 | O-ring | 2 |
| 12 | Front cover | 1 | 27 | Reversing button | 1 | 42 | Exhaust cover | 1 |
| 13 | Rotor | 1 | 28 | Back pad | 2 | 43 | Air inlet | 1 |
| 14 | Rotor blade | 6 | 29 | Bolt M8 x8 | 1 | | | |
| 15 | Pin 4x46 | 1 | 30 | Pin | 1 | | | |