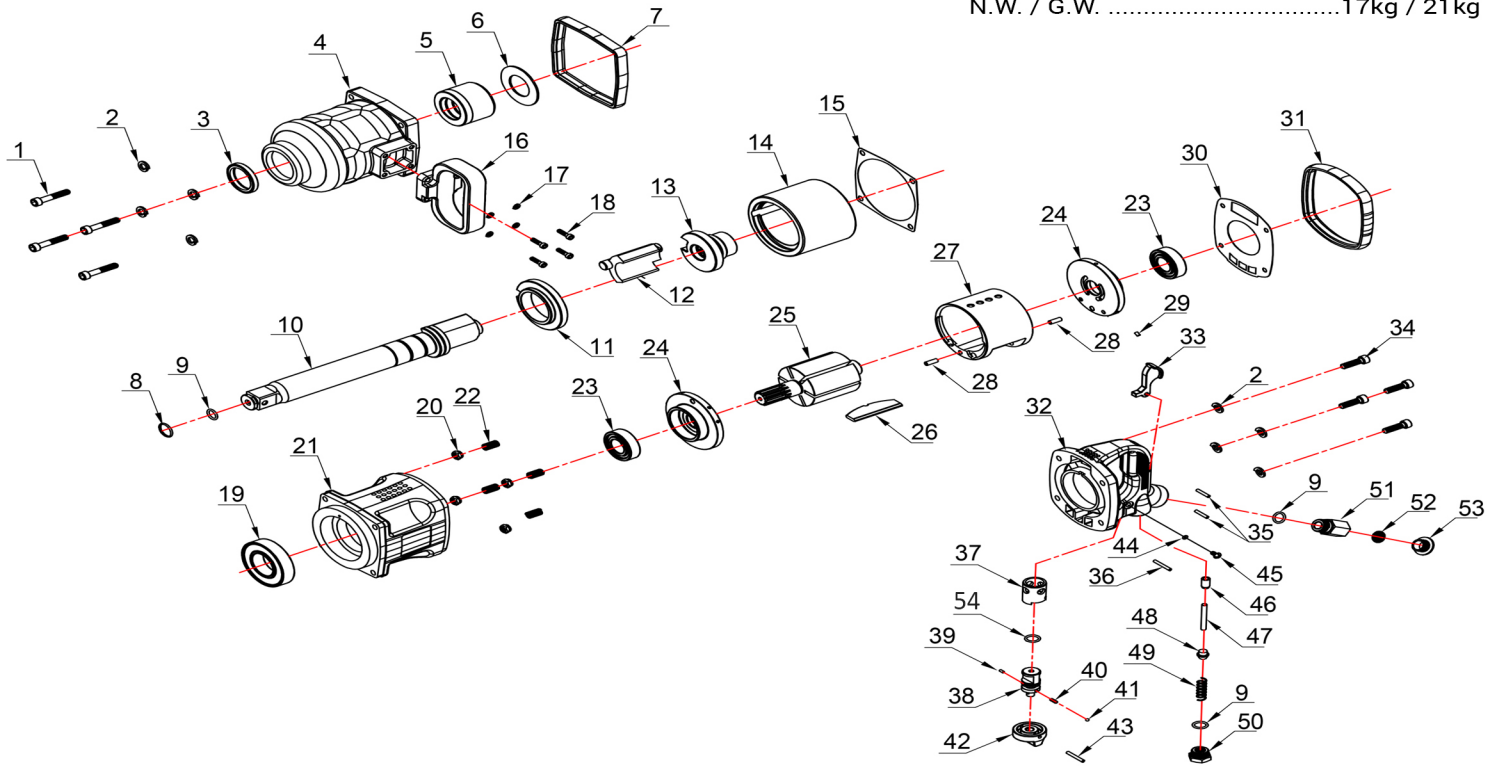


1" IMPACT WRENCH

Square Drive.....1"
 Rated No Load Speed.....3800 RPM
 Maximum Torque.....3200 N.m.
 Envil Length.....8 Inch

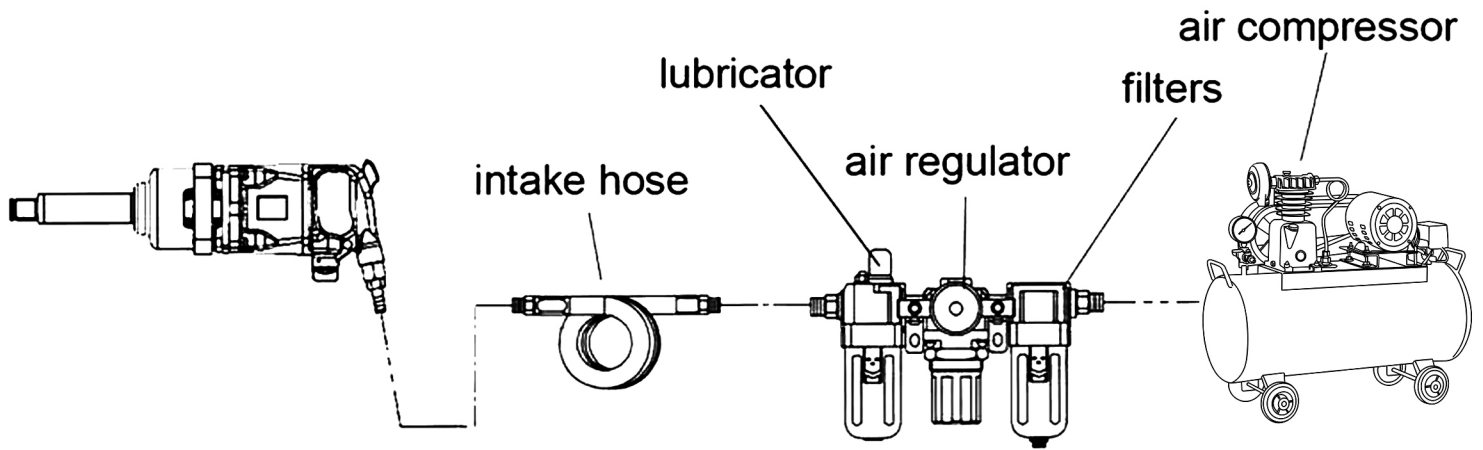
1" PIN-LESS HAMMER AIR IMPACT WRENCH

Bolt Capacity.....48mm
 Hammer Type.....Pinless Hammer
 Air Inlet.....1/2" BSP
 Air Pressure.....8-12BAR(115-175PSI)
 N.W. / G.W.17kg / 21kg



SR NO	PART NAME	QTY.
1	ALLENKEY BOLT M8X1.25X50	4
2	SPRING WASHER M8	8
3	OIL SEAL 40*52*7	1
4	FRONT HOUSING / LOWER BODY	1
5	OIL SLEEVE	1
6	WASHER 70X38X2	1
7	PROTECTING FRONT RUBBER SEAL	1
8	SHAFT PROTECTING LOCK/RING	1
9	O-RING 19*2.5	3
10	SHAFT (ENVIL)	1
11	HAMMER FRAME LID COVER	1
12	HAMMER	1
13	DRIVE CAM / COUPLER	1
14	HAMMER FRAME / CYLINDER	1
15	FRONT HOUSING GASKET / LOWER BODY GASKET	1
16	D-HANDLE	1
17	SPRING WASHER M6	4
18	ALLENKEY BOLT M6*25	4
19	BALL BEARING 6208 ZZ	1
20	NYLOCKNUT M8*1.25	4
21	MIDDLE HOUSING / MAIN BODY	1
22	THREAD INSERT M8*1.25	4
23	BALL BEARING 6205 ZZ	2
24	CYLINDER COVER / CYLINDER FLANGE	2
25	ROTOR	1
26	ROTOR BLADE / VANES	6
27	MIDDLE BODY CYLINDER	1

SR NO	PART NAME	QTY.
28	DOWEL PIN 6*16	2
29	DOWEL PIN 4*6	1
30	UPPER BODY GASKET / MIDDLE BODY GASKET	1
31	PROTECTING HANDLE RUBBER SEAL	1
32	MAIN HANDLE	1
33	METAL TRIGGER / SWITCH	1
34	ALLENKEY BOLT M8*30	4
35	DOWEL PIN 4*22	2
36	DOWEL PIN 4*30	1
37	SPEED CONTROL VALVE BUSH	1
38	SPEED CONTROL VALVE	1
39	DOWEL PIN 3*8	1
40	SPEED CONTROL VALVE SPRING	1
41	SPEED CONTROL VALVE STEEL BALL	1
42	SPEED CONTROL VALVE KNOB	1
43	DOWEL PIN 4*30	1
44	O-RING 6*2	1
45	BUTTON BOLT M8*10	1
46	COPER BUSH 10MM	1
47	AIR INLET ROD 6MM	1
48	AIR VALVE / THROTTLE VALVE	1
49	AIR INLET SPRING	1
50	AIR INLET CLOSE CAP	1
51	AIR INLET NIPPLE	1
52	AIR FILTER SCREEN	1
53	DUST PROTECTION CAP	1
54	O-RING 17*2.5	1



Safety Regulations/Operation instruction

Our Brand Air Impact Wrenches are made of wear-resistant and shockproof materials under excellent design and strict quality control.

Notes to the users before operating:

1. Before each shift, lubricate the tool with 3-5 drops of Pneumatic oil through air inlet. Don't add the oil with big viscosity, and keep the tool running idly for 1-2 seconds. Otherwise it will reduce the force of air motor.
2. Keep dry and clean of air cylinder And gas container, and be sure that the supply tube shall not be air leakage.
3. Check to see if the air gauge is at 12KG before use it, safety standard level within 8-12KG of working pressure.
4. In order to keep normal operation of this unit, be sure to fill in the air and water from air outlet of air cylinder, filter, and auto oil filler combination.
5. If no oil filter, please fill oil in according to the assigned oil port. Fill oil in before working to keep the best performance function of this unit. Please use of recommended oil or spindle oil for pneumatic spanner.)
6. If this unit keeps still without running or Sounds not smoothly, please use of large capacity of special recommended oil or spindle oil to fill in for pneumatic spanner turning. Remove and clean away the dirt and obstacles. If they are unable to be removed after continuous twice or three times, please send them to the dealer for repair or maintenance.
7. In order to protect the tools and extend service life we advise that 3-point combination and air-drying machine should be fixed in pipeline of air compressors.
8. Clean those tools which haven't been used for over half a year and seal them properly with oil.
9. Please put on safety protective glasses when operate.



आत्मनिर्भर
भारत



RoHS | CE | AN ISO
9001:2015
COMPANY